



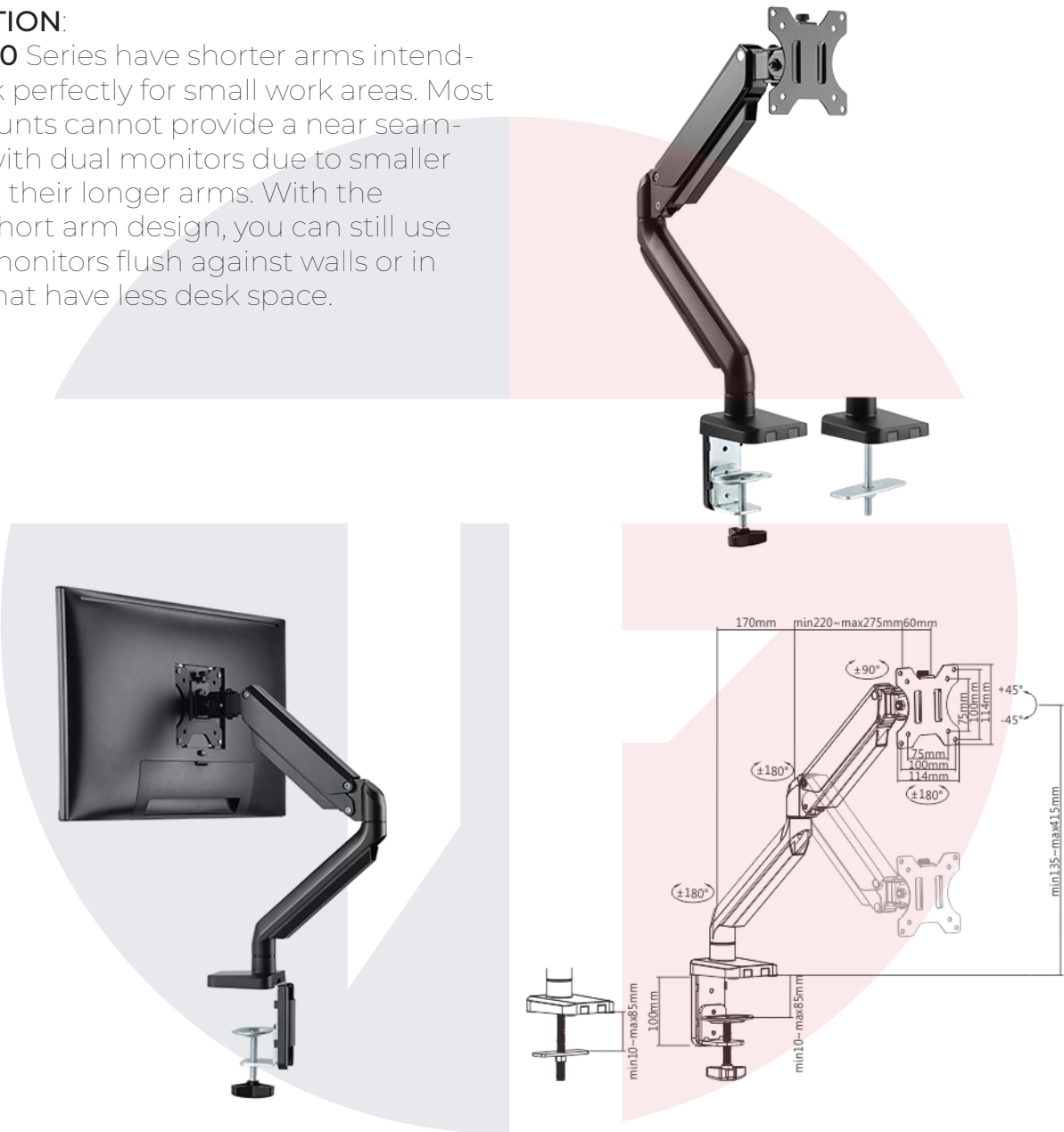
# TF-F80

Doing it Right!

## Premium Single Monitor Aluminum GAS Spring Monitor ARM

### DESCRIPTION:

The **TF-F80** Series have shorter arms intended to work perfectly for small work areas. Most larger mounts cannot provide a near seamless look with dual monitors due to smaller space and their longer arms. With the TF-F80's short arm design, you can still use multiple monitors flush against walls or in cubicles that have less desk space.



Screen Size

17"-32"



VESA

100x100mm



Swivel Range

+90°~-90°



Wight Capacity

1.5~8kg



Tilt Range

+45°~-45°

For more information contact:

Office 26 Al Suwaidi Building, 10A Street, Naif, Deira, Dubai, U.A.E.  
Mobile: +971 50 950 9334, Tel: +971 4 558 7680, Email: [info@techfortme.com](mailto:info@techfortme.com)



[www.techfortme.com](http://www.techfortme.com)